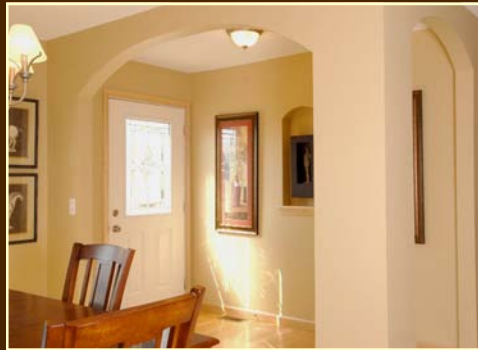




# What will my Pennwest home look like?



Natural Maple "KCMA" Cabinets



Architecturally Exciting Foyers



Oak Cabinets w/ Appliance Pkg



Tranquil "Escape Bath" with Fireplace



"Escape Bath" Ceramic Shower



Rich "Mocha Maple" Cabinets

# How will my new home be constructed?



**Feature:** Double 2x10 perimeter rails around each half of the floor and (4) 2x10's at the center line.

**Graded lumber used thru-out home**

**Benefit:** 2x10's give greater strength and stability when installed over a crawl space.

**Graded lumber** is better lumber. It has a lower moisture content and fewer knots. Lower moisture helps eliminate warping and fewer knots create stronger lumber.



**Feature:** Truss Floor Joists—16" on center  
**Benefit:** An Engineered truss floor joist is stronger than a 2x10. Some manufacturers using a truss system build on 19'3" centers. Pennwest builds only on 16" centers.



**Feature:** Fiberglass Heat Ducts with R-Value of 4.3

**Benefit:** Insulated ducts are *whisper quiet* with minimal heat loss. This saves energy and lowers the heating bill.



6" Insulated Duct

**Feature:** 6" Insulated Heat Run (with an R-Value of 4.2) carry air to perimeter registers

**Benefit:** Perimeter ducts carry air from the main duct to the perimeter register. R-4.2 helps eliminate heat loss.

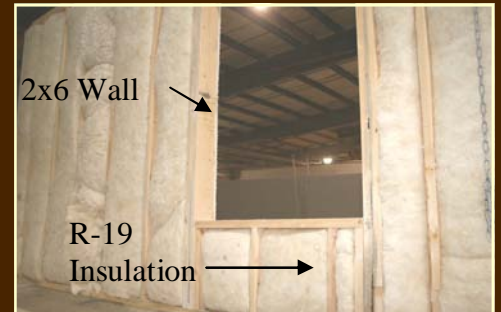


**Feature:** CREX-X 3/4" floor decking  
**Benefit:** CREX-X 3/4" floor decking has a 25 year warranty and is a solid piece of decking. (No potential gaps between laminated layers like plywood) **CREX-X** Sheets are 8'x14' with fewer seams, no unsupported joints and a smoother, harder surface than plywood.



**Feature:** High efficiency furnace with water heater (Both installed)

**Benefit:** High efficiency furnace reduces heating bills. There is no cost to install a heating system or water heater. This helps shorten completion time and save money.



2x6 Wall

R-19 Insulation

**Feature:** 2x6 sidewalls w/ R-19 Insulation

**Benefit:** 2x6 walls are stronger and have more depth than a 2x4 wall and allow increased insulation. (R-19 instead of R-11)



**Feature:** All exterior walls are wrapped in O.S.B. Sheathing and Weather Wrap.

**Benefit:** O.S.B. increases the structural strength of the home and weather wrap helps eliminate air infiltration.



**Feature:** 2x4 center walls and 2x4 interior walls.

**Benefit:** Superior to 2x3 studs because 2x4 studs add an extra inch of support to the walls.



**Feature:** (3) 2x6 studs over all doors and windows. Notice the extra studs at the side of the window.

**Benefit:** Creates a very strong support header and an extra strong window opening.

# Exciting Exteriors with Exceptional

# Curb



**Feature:** Double 2x6 top plate  
**Benefit:** Increased strength where the sidewall and roof are connected.



**Feature:** Thermo pane, vinyl, tilt in windows  
**Benefit:** Energy efficient, easy to clean. Uses 3/4" insulated glass & constructed w/ virgin PVC vinyl. Fusion welded frame and sash corners add strength and durability.



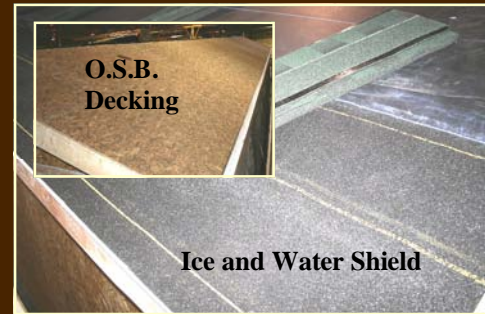
**Feature:** LVL (Laminated Veneer Lumber) beams at ceiling spans  
**Benefit:** LVL beams are 2.5 times stronger than conventional lumber and insure greater stability at spans.



**Feature:** Heavy duty 2x4, 2x6 or 2x8 truss rafters. (Rafter size depends on roof design)  
**Benefit:** Creates an extremely strong rafter system



**Feature:** Baffles in the roof cavity w/blown insulation  
**Benefit:** Baffles increase the air flow into the roof cavity and are very effective against Ice Build Up. Blown insulation eliminates any gaps and is more energy efficient.



**Feature:** O.S.B. roof decking with Ice & Water Shield.  
**Benefit:** O.S.B. creates a strong & durable roof. Ice and Water Shield is effective against ice build up and helps prevent water from penetrating the roof.



**Feature:** 30 year dimensional shingles with ridge vent  
**Benefit:** Shingles are very high quality with an elegant appearance and give years of dependable service. The ridge vent gives superior air flow throughout the attic. Many other manufacturers use unsightly round vents.

## THE PENNWEST PLANT ADVANTAGE



All Pennwest Homes are constructed in one of the most advanced, state of the art housing production facilities in America. Another assurance of Quality.

# Why should I buy a Pennwest Modular Home instead of a site built home?

## Modular Construction



Where do you want the materials for your new home to be stored?



What quality lumber do you expect, and is *Wet Wood* acceptable?



Is standing water and soaked floor decking something you want?



Which environment is perfect for the construction of your new home?

## Site Built Construction

