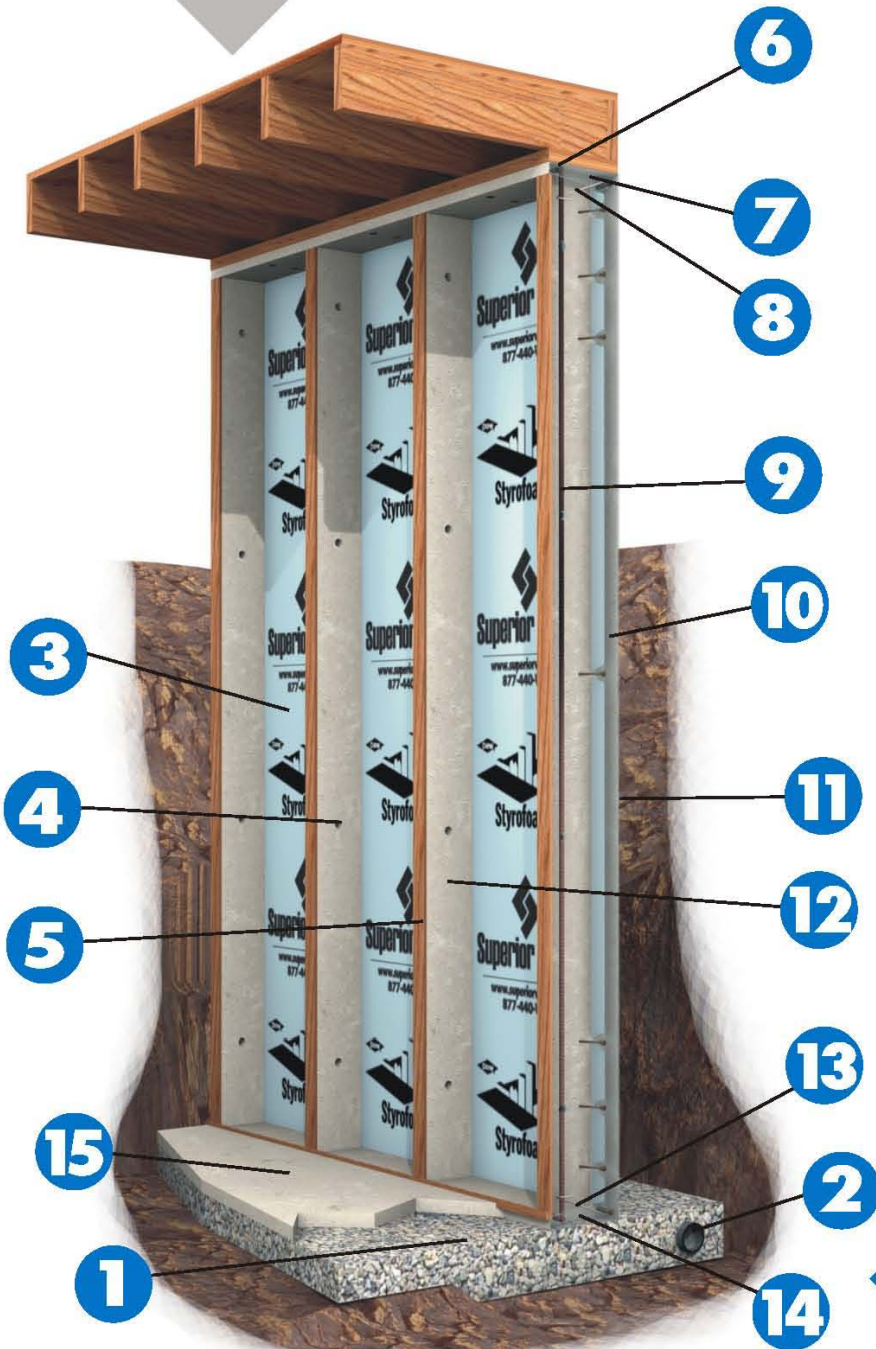


A BETTER SOLUTION



SUPERIOR WALLS R-5 FOUNDATION SYSTEM



DRY

Your permanent barrier against sidewall water penetration

- 1 Clean Crushed Stone Footing
- 2 Auxiliary Drain Pipe
- Superior Sealant® Applied in All Joints for Permanent Moisture Barrier

WARM

Warmer in winter, cooler in summer... reduces your homes' energy loss

- 3 1" DOW® Extruded Polystyrene Insulation (R-5) Built-In
- Up to R-24 Optional On-Site

SMART

Ready to finish...with pre-engineered access built-in

- 4 Access Holes for Ease of Wiring and Plumbing
- 5 Treated Wood Nailer Ready for Drywall Finishing
- CAD Custom Designed to Virtually Any Home Style
- Laser-Leveled to be Plumb, Level, Square
- Installs on Your Site in Just Hours for Time and Money Savings
- America's Strongest Foundation Guarantee*

SUPERIOR

Steel reinforced...and backed by the industry's strongest guarantee

- 5,000+ psi Concrete for Superior Strength
- 6 Horizontal Steel Rebar
- 7 Steel Reinforced Top Bond Beam
- 8 Top Shear Connector
- 9 Vertical Steel Rebar (Inside each Stud)
- 10 1-3/4" Concrete Face Shell
- 11 10-1/4" Overall Wall Thickness
- 12 Steel Reinforced Concrete Studs
- 13 Bottom Shear Connector
- 14 Steel Reinforced Footer Beam
- 15 Concrete Floor

Special Note: Items #1, 2, & 15 as well as the joist/flooring system are provided on site per Superior Walls specifications by builders and contractors as an integral part of the Superior Walls foundation system.

**See the limited warranty. Contact your local Superior Walls representative for details*

Superior Walls
THE FOUNDATION
OF EVERY SUPERIOR NEW HOME™
www.superiorwalls.com



- Provided with 1" of insulation = R5
- 5000+ PSI concrete reinforced with rebar and polypropylene fibers
- Precast access holes for wiring and plumbing
- Treated wood nailers on each stud
- May be Insulated up to R24
- Precast openings for windows and doors
- No additional dampproofing required
- Reduces building time
- Ready in virtually any weather

**Superior
In Every Way.
Guaranteed.***



*See the limited warranty.
Contact your local Superior Walls
representative for details

General Specifications

Superior Walls is an insulated precast concrete wall system that is custom manufactured to each building's specification. The product forms a concrete cavity wall panel with concrete studs at 24 inches on center attached at the top and bottom with bond beams and the entire assembly is faced with an integral concrete face shell. The wall is reinforced with rebar and polypropylene fibers providing additional structural strength. In addition, the concrete studs are cast with holes for wiring and factory attached wood nailers on each stud for interior finishing.

Superior Walls are available in heights of 4'-0", 4'-8", 8'-2", 9'-0", and 10'-0" and in custom lengths to suit your project. The maximum axial load (uniform house weight) for this product is 5500 pounds per linear foot. Special point loads up to 30,000 pounds can be accommodated.

WARRANTY* **Superior Walls** are warranted for 15 years against defects in workmanship and side wall water penetration.

QUALITY ASSURANCE Each manufacturing plant is regularly inspected by an independent third-party inspection agency to insure compliance with the Quality Assurance program. In addition, manufacturing and installation personnel are trained and certified by **Superior Walls of America, Ltd.**

DAMP-PROOFING The concrete used in **Superior Walls** provides protection against freeze/thaw cycles and water vapor transmission. The urethane sealant used between panels provides superior protection against water penetration. Therefore, no additional damp proofing materials are required.

VAPOR BARRIER The closed cell polystyrene material in the Dow Styrofoam® provides a vapor barrier for **Superior Walls**.

FIRE RESISTANCE Dow Styrofoam® exhibits the following surface burning characteristics: flame spread 5 and smoke developed 165. The **Superior Wall** does not require the attachment of a 15 minute thermal barrier over the foam plastic as proven by UBC 26-3 and equivalent UL 1715 tests. The **Superior Wall** qualifies as a two-hour fire separation wall when 2 layers of 5/8" Type 'X' drywall are applied to the studs.

BUILDING CODE ACCEPTABILITY

ICC-ES ESR-1553
HUD Structural Engineering Bulletin No. 1117 Rev. 5
Wisconsin Building Product Approval No. 970062-R

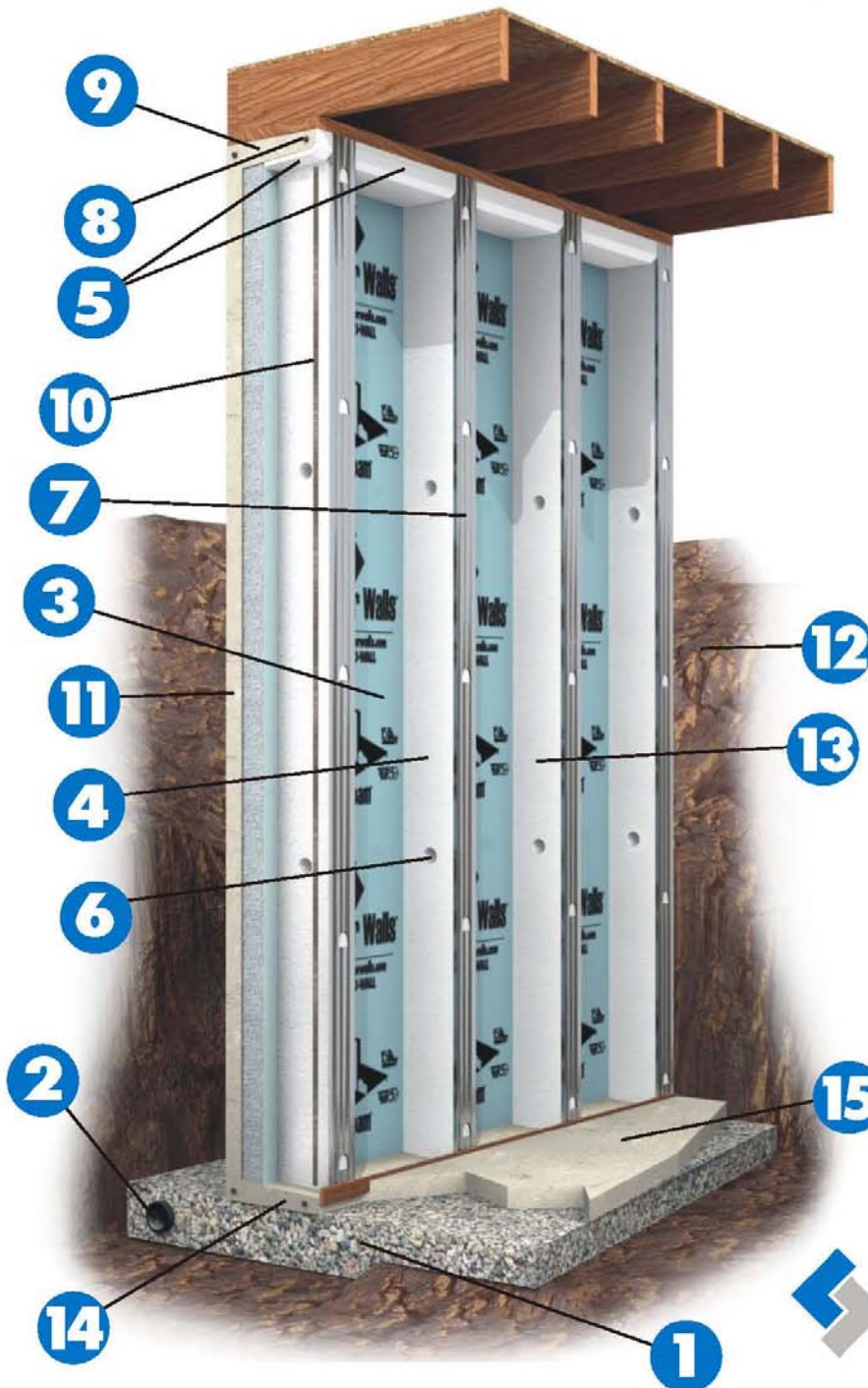
Superior Walls of America franchises are independently owned and operated. Check with your local Superior Walls of America representative for availability.



THE BEST SOLUTION



SUPERIOR WALLS Xi FOUNDATION SYSTEM



DRY

Your permanent barrier against sidewall water penetration

- 1 Clean Crushed Stone Footing
- 2 Auxiliary Drain Pipe
- Superior Sealant* Applied in All Joints for Permanent Moisture Barrier

WARM

Warmer in winter, cooler in summer... reduces your home's energy loss

- 3 2 1/2" DOW® Extruded Polystyrene Insulation
- 4 1" Foam Insulated Concrete Studs
- 5 1" Foam Insulation on Bond beam

SMART

Ready to finish...with pre-engineered access built-in

- 6 Access Holes for Ease in Wiring and Plumbing
- 7 Galvanized Steel Stud Facing Ready for Drywall Finishing
- CAD Custom Designed to Virtually Any Home Style
- Laser-Leveled to be Plumb, Level, Square
- Installs on Your Site in Just Hours for Time and Money Savings
- America's Strongest Foundation Guarantee*

SUPERIOR

Steel reinforced...and backed by the industry's strongest guarantee*

- 5,000+ PSI Concrete for Superior Strength
- 8 Horizontal Steel Rebar Inside Top and Bottom Beams
- 9 Steel Reinforced Top Bond Beam
- 10 Vertical Steel Rebar (Inside Each Stud)
- 11 1-3/4" Concrete Face Shell
- 12 10-1/4" Overall Wall Thickness
- 13 Steel Reinforced Concrete Studs
- 14 Steel Reinforced Footer Beam
- 15 Concrete Floor

Special Note: Items #1,2,&15 as well as the joist/flooring system are provided on site per Superior Walls specifications by builder and contractors as an integral part of the Superior Walls foundation system.

**See the limited warranty. Contact your local Superior Walls representative for details.*



Superior Walls

THE FOUNDATION
OF EVERY SUPERIOR NEW HOME™

www.superiorwalls.com



EXTRA STRENGTH. EXTRA INSULATION.

- Provided with 2-1/2" of insulation = R-12.5
- 5000+ PSI concrete reinforced with rebar and polypropylene fibers
- Precast access holes for wiring and plumbing
- Meets Energy Conservation Code requirements for basements (IECC, IRC Chapter 11)
- Thermally isolated/insulated from exterior.
- Insulated corners, studs and bond beam
- Monolithically poured = greater strength
- Galvanized steel stud facing
- May be insulated up to R-31.5
- No additional dampproofing required
- Precast openings for windows and doors
- Reduces Building Time
- Ready in virtually any weather

**Superior
In Every Way.
Guaranteed.***



*See the limited warranty. Contact your local Superior Walls representative for details

General Specifications

Superior Walls is an insulated precast concrete wall system that is custom manufactured to each building's specification. The product forms a concrete cavity wall panel with concrete studs at 24 inches on center attached at the top and bottom with bond beams and the entire assembly is faced with an integral concrete face shell. The wall is reinforced with rebar and polypropylene fibers providing additional structural strength. In addition, the concrete studs are cast with holes for wiring and factory galvanized steel on each stud for interior finishing.

Superior Walls are available in a variety of standard heights and custom lengths to suit your project. The maximum axial load (uniform house weight) for this product is 5500 pounds per linear foot. Special point loads up to 30,000 pounds can be accommodated.

WARRANTY* *Superior Walls* are warranted for 15 years against defects in workmanship and side wall water penetration.

QUALITY ASSURANCE Each manufacturing plant is regularly inspected by an independent third-party inspection agency to ensure compliance with the Quality Assurance program. In addition, manufacturing and installation personnel are trained and certified by *Superior Walls of America, Ltd.*

DAMP-PROOFING The concrete used in *Superior Walls* provides protection against freeze/thaw cycles and water vapor transmission. The urethane sealant used between panels provides superior protection against water penetration. Therefore, no additional damp proofing materials are required.

VAPOR BARRIER The closed cell polystyrene material in the Dow Styrofoam® provides a vapor barrier for *Superior Walls*.

FIRE RESISTANCE Dow Styrofoam® exhibits the following surface burning characteristics: flame spread 5 and smoke developed 165.

The *Superior Wall* does not require the attachment of a 15 minute thermal barrier over the foam plastic as proven by UBC 26-3 and equivalent UL 1715 tests.

The *Superior Wall* qualifies as a two-hour fire separation wall when 2 layers of 5/8" Type 'X' drywall are applied to the studs.

Superior Walls of America franchises are independently owned and operated. Check with your local Superior Walls of America representative for availability.

